

B.C. HYDRO SKI

CLUB 1965-1970

WHISTLER CHALET BLDG

B.C. HYDRO SKI CLUB

by Walter Marks

Early Days in 1965

How was it possible for a ski club to start up and become operational with its own chalet within four years?

Although skiing is often considered to be a winter recreation activity for individuals, interest was building for the B.C. Hydro Social Club (BCHSC) to offer snow related activities. The prospect of skiing at Whistler Mountain, scheduled to open in December 1965, and the possibility of Winter Olympics at Whistler in the future was hot news in the press and awakened a popular interest in downhill skiing. Harry Winter, president of BCHSC, suggested to me that skiing-minded Social Club members form a committee to organize a ski club.

The first group to meet composed a questionnaire which was circulated in Head Office and International Power and Engineering Consultants (IPEC). The ten questions and request for comments were intended to gauge the interest and commitment towards a ski club. The group also went on to appoint "floor representatives" who would distribute ski club information and would be the connection between members and the future ski club executive.

The questionnaire produced 125 replies including ten respondents who were interested in serving on the executive. Predominant interest was (1) skiing at Whistler, (2) bus or car pool transportation to Whistler and other mountains, (3) ski school for beginners, and to a lesser extent (6) overnight accommodations at Whistler. The majority (68) classed themselves as beginners, two-thirds were individual _____ and one-third were interested in family memberships. Of the comments offered, only one sounded a caution -- "I am of the opinion a club would not go over and would be too binding for most skiers".

On December 5, 1965, the Social Club, chaired by President Harry Winter, held a general meeting to launch the Ski Club. The committee had acted on the questionnaire and reported on aspects and activities of a ski club. Archie Anderson spoke on a proposed constitution under which the club would operate. Howard Hardman reported on accommodation and trips to various ski areas. Bob Middlemass covered transportation and Walter Marks spoke on ski lessons and social aspects.

The Ski Club officers elected were:

President	Walter Marks
Vice-President	Bob Middlemass
Sec.-Treas.	Juanita Cowell
Directors	Archie Anderson, Heather Davidson, Howard Hardman, Gordon LeNeven.

Comments from the floor showed a general interest in club membership fees, in a cabin site at Whistler, and in a club crest. One skier expressed the hope we would aim towards an organization such as found in his native Switzerland. Generally the expectations were very challenging to the new executive.

The Real Work Begins

Three days later the executive held their first meeting, a brown bag lunch in the HO second floor conference room. There was no time to lose. The club membership drive, financial controls, ski school arrangements and floor representative activities were pressing matters to be dealt with.

For the longer term, five committees were formed. Howard took on Information chair which included accommodation, lessons, equipment and newsletters. Heather headed Transportation and floor representative communication. Gordon volunteered to chair Chalet Planning. Juanita chose the Ski Tour Committee and Archie chaired Constitution and Bylaws. Bob, our VP, was to assist any committee that needed support.

These noon hour meetings were to become standard practice. By the next meeting, Dec. 21, membership had reached 106 with several floor reps still to report. Juanita reported on her plans for weekend bus tours to ski destinations; a newsletter would give details. The Ski Club had \$318 in the bank from membership dues. We were committed to the approaching ski season. No one expressed any worries -- the slopes were white and the sky was all blue!

The Time to Respond is Now

By the Jan. 10, 1966, executive meeting, the pressure points were obvious. We grudgingly sent Amateur Ski Association \$92, the membership assessment, from our tiny reserve. Heather, after some problems hearing from floor reps, scheduled a meeting with them. Gordon reported on land to be made available in the club cabin area at Whistler. Juanita undertook the bookings for the first weekend tour -- a bus load to Tod Mountain for Feb. 25-27. Howard was to firm up ski lessons at Whistler.

We were learning quickly. We now were depending on enough response to indicate if members were sufficiently committed for the Ski Club to succeed.

At the Annual General Meeting on April 27, 1966, the extent of participation was reported by executive members. The secretary-treasurer reported a membership of 142. Eighty-eight took part in weekend tours to Tod Mountain, Apex and Stevens Pass and 78 in two bus trips to Whistler. Revenues from these trips and dues left the club with \$642 in the bank after expenses. Heather reported on the success of communications through 18 floor reps in Head Office, IPEC and area offices. Howard reported bus and ski lesson packages were popular with 78 members as were the three bus trips and lessons to Mount Baker. Archie presented a Constitution draft and Gordon reported on the chalet planning group which had been especially active.

In February 1966, President Walter Marks reported he had written to Harry Winter, athletic director of the HO Social Club, detailing resources and operating expenses. He enquired under what circumstances Staff Services Division (SSD) might consider extending a capital loan for the purpose of building a ski cabin at Whistler Mountain. Harry replied that SSD had requested further information. In response, the Planning Committee began work on the Chalet Construction Proposal, dated April 7, 1966. Apart from the details of Ski Club operations, the proposal presented an estimate of cost and repayment schedule based on architectural drawings by Heinze Prinke. These drawings showed a single chalet building using conventional construction and situated on Lot L of the Club Cabin Area which was to be leased from the Department of Lands, Victoria.

This construction proposal became the basis of discussion through SSD Manager Mr. Garth Griffiths with Dr. H.L. Keenleyside, B.C. Hydro Chairman. At the time of the general meeting the Ski Club had not heard back. Gordon expressed the hope of a favourable response. To continue the work of chalet planning, Gordon moved two motions: (1) that the Ski Club proceed with application for a chalet site on Lot L, and pay the initial fee (approximately \$500) for the development of services, and (2) that the Chalet Planning Committee proceed with detailed planning of the chalet and combine their efforts to negotiate a capital loan of \$18,000 necessary for the first stage of construction.

After much discussion the two motions were carried unanimously. Howard Hardman moved a related motion "that failing our attempts to raise \$18,000 through a loan from B.C. Hydro, an extraordinary meeting be called to discuss other ways to finance chalet construction". This was seconded and carried.

Harry Winter assumed the chair for the election of Ski Club officers for 1966-67.

Results were:

President	Walter Marks
Vice-Pres.	Bob Middlemass
Treasurer	Gail Gosse
Secretary	Juanita Cowell
Directors	Archie Anderson, Howard Hardman, Andrew Chan, Gordon LeNeveu.

Our Second Year - No Stopping Now

In July 1966 the Ski Club received a letter from Dr. Keenleyside informing that the Executive Management Committee had considered the club's submission, and decided

"While sympathizing with the objectives of the club and impressed by the work that has been done towards the development of its program the Committee decided that in view of the present financial situation the Authority would not be justified in advancing the requested loan to the Club at the present time."

In our reply we thanked Dr. Keenleyside for his efforts on our behalf.

The executive met twice in August to assess our limitations and consider how the club would proceed. We were fortunate to have retained executive members into the second year, except for Heather, a non-skier, who had volunteered to help get the club going. By the late summer Juanita, our club secretary who did her work with such enthusiasm and efficiency, left our executive and the Authority. Juanita had developed the weekend tour programs despite the difficulties - slow mail responses in getting accommodation, overcoming problems of neglected cancellations or "no show", weather complications - and still gave us very much enjoyed trips at a substantial profit to the club. We decided to continue the trips, the ski lessons and transportation arrangements, which had had good support.

The executive invited Jean Popplewell (Gibson) to be club secretary for the rest of the 1966-67 season. Gail Gosse was the new treasurer and Andy Chan was to volunteer to lead the chalet finance committee.

Chalet Planning - New Challenges

Gordon reported that chalet planning had to take into account new limitations at Whistler that would need substantial revision of the construction proposal. The Department of Lands was negative towards the clubs operating the Club Cabin Area through a joint venture agreement. This meant that the Department of Lands, alone,

would decide what infrastructure was to be provided. The Department of Lands decided that a parking lot would be provided on the north portion of Club Cabin Area Blk. A (Exhibit 2 Appendix) next to Highway 99. The Highways Department had insisted on blocking the old logging tote road through the area as its exit on to Highway 99 was at a dangerous curve in the highway. The gazetted road allowances, for future road access to individual lots, were not to be built at this time. Consequently access from the parking area to Lot L was over a hiking trail and no water or sewer services were to be provided. Our next door neighbors, the Alpine Club, were accustomed to building on remote sites, and the UBC Outdoor Club had a large membership to carry in material.

Both clubs proceeded with their programs. B.C. Hydro Ski Club did not have the long history of operation and the capital backing of these clubs. Our ski club had not yet been registered under the Societies Act, a requirement for participation in the Club Cabin Area. Our application for registration was dependent on acceptance of our constitution, which despite Archie Anderson's best efforts and help of lawyers at Ladner Downs (at no charge), was being held up for revisions.

To confront these problems Gordon and Walter were joined by Fred Otte who added more practical construction experience. The chalet design would be changed to utilize lighter materials and a three building design which could be built in two stages as money became available. The buildings would be joined by enclosed hallways. The first stage would include two "A" frame buildings with basements. Building 1 would serve as kitchen and dining room and temporarily as lounge. The balcony area had eight bunks and the basement served for ski equipment maintenance and storage.

Building 2 would have sleeping rooms on the main floor and dormitory accommodation on the upper floor. The basement would have washrooms, toilets and showers. The water was to come from a creek which descended from the forest area to the east of Club Cabin Area. Sewage disposal was to require a large septic tank and disposal field on our 1.86 acre Lot L. A revised chalet construction proposal with sketches of floor plans was to be available for the upcoming Extraordinary Ski Club Meeting.

Estimate of costs for the first two buildings assumed primitive conditions in the first year and completion in the second year if the expected funds and manpower became available.

The remainder of our plans, Building 3, was to be undertaken as Stage 2 and would contain a main lounge with stone fireplace and a front desk office area and possibly caretaker accommodation. As this Stage 2 would be too expensive for a young ski club, it would not be included in the construction proposal at this time. At an even later time another building with bedrooms could be added without serious changes to earlier facilities.

Chalet Building Program

The extraordinary meeting on September 26, 1966, adopted the construction plan for Stage 1 which was to be financed by sale of 150 debentures, each with a nominal value of \$130. They carried a coupon of six nights of accommodation for a club member and were to be recalled by the club at face value as soon as possible up to a maximum of 20 years.

A finance committee was subsequently formed with Andy Chan heading up sales and Jack Pyfinch the construction program treasurer. Sales were conditional on a minimum of 94 debentures being subscribed. This would cover cost of materials for most of the essentials for Stage 1. It was our intention that club members do all the construction work. The minimum target was reach by January 27, 1967.

As it looked like a ski chalet could go ahead, a construction detailed planning group was formed. Walter Marks produced detail construction drawings and Fred Otte produced construction material estimates and a budget for chalet components.

The general meeting was held on April 28, 1967, at the Stanley Park Tea House. The Ski Club executive had been outstanding in their activities. The club constitution was complete and we were a registered society and qualified to lease Block L, site for the ski chalet. Planning committee had finished its work and a construction team was started and would be recruiting work leaders. Club secretary Jean Gibson reported we had 173 members. Sixteen bus trips were supported by 282 weekenders and ski lessons by 31 at Mount Baker, and accommodation at Apex, Tod Mountain, Stevens Pass and Diamond Head in Garibaldi Park. Club treasurer Gail Gosse reported cash surplus available to purchase five debentures which would bring the total sold to 103.

Despite severe storms on our trips to Mt. Baker and icy conditions at Apex and Tod Mountain, the trips were appreciated and well supported.

With financing and land lease preliminaries in hand and the support of an active executive and membership, the first work on site began on May 13, 1967.

The new executive elected for the 1967/68 season were:

President	Walter Marks
Vice-President	Phil Smith
Secretary	Jean Gibson
Treasurer	Sandy Foreman (Coupe)
Directors	Ian Denbigh, Klaus Haring, Barry Huggins, Ernest Stutzer and, later, Gordon Blue.

Outgoing treasurer Gail Gosse and club founding directors Bob Middlemass, Archie Anderson, Howard Hardman, Gordon LeNeveu and director Andy Chow were thanked for their great contributions to the Ski Club.

The meeting ended on a high note with a social party.

Ski Chalet Construction Begins

The first meeting of the new executive, May 24, 1967, dealt with the apportionment of club activities to executive members. In addition, the support groups to the chalet construction program had to be organized in a hurry because the first group was already surveying and preparing the site at Whistler.

The May newsletter had explained our program and volunteers had responded positively. The work was to be broken down into defined portions which were to be the responsibility of a work leader. He would muster club members or others to help him and extra volunteers would be added as they came forward on short notice. The club helped arrange transportation and provided food during the weekends when the work was to be done.

The work leaders for that first summer were:

Joe Watanabe, survey and site preparation;
Jack Coupe, foundations and dorm building assembly;
Frank Archibald, lounge building assembly;
Fred Otte, overall chalet carpentry and electrical;
Ernie Stutzer, shake roofing;
Harvey Abell, plumbing
Jack Pyfinch, budgets and accounts payment.
Chief cooks were Kris Kallberg, Sandy Foreman and Carolyn Kirk.

The ladies did jobs ranging from moving materials including concrete, to insulating and painting.

Since our Lot L site in the Club Cabin Area did not have normal street access or water and sewer services, transport and construction problems had to be overcome.* Coordination or assignments between the work leaders and overall management was handled by Walter Marks. There was a great deal of "helping out" between working groups to put it all together. Considering that only a small percentage had construction experience, the work leaders were called on to train and coach the ever changing work force of volunteers. The end result was a good level of workmanship even though it took longer than originally expected.

Winter Season 1967/68

At the November 10, 1967 general meeting, chalet construction progress was reported for the first summer of construction.

1. Lounge building 1 "A" frame was 90% complete.
2. Dormitory building 2 "A" frame and lower area 80%.
3. Disposal field and septic tank 97% complete.
4. Basement areas for showers and toilets and ski equipment room had been roughed-in, 10% complete.
5. Weekend work parties had included 138 club members and friends who had worked 4667 hours on site. Work leaders and club members (35) who repeatedly returned contributed 3135 hours or an average 90 hours and the other 103 volunteers contributed 1533 hours, an average of 15 hours each. The compensation was a work coupon for each four hours of work which could be used for one night of accommodation in the ski chalet.

The chalet was expected to be open by Christmas 1967, and it was - for those who chose to rough it.

A chalet organization committee headed by Klaus Haring had been active prearranging for the opening. Club members were cautioned, through information bulletins, not to expect hotel accommodation, just yet.

Parking was next to Highway 99 on the common club area Blk. A. Ski equipment, food and sleeping bags had to be carried in on a walking trail, five to 15 minutes to the chalet, depending on how deep the snow was. The electric heating was operational but indoor plumbing was not. The outdoor privy was 60 feet away from the chalet and would have to do us for the first winter. Club members headed by Ernie Stutzer managed operations, on a rotating basis.

For members not yet ready for Whistler activities, bus tours were scheduled at other mountains and ski lesson programs with H.A. Simons Club were offered.

Third Year-End Meeting

At the third year-end club meeting on April 25, 1968, club executives once again reported good participation in activities, however membership was down 13% to 151. Executive had held a total of 17 meetings.

Three bus tours -- to Apex, Tod Mountain and Diamond Head -- did well but the trip to Big White was cancelled because of extreme road and snow conditions.

On March 17, 26 H.A. Simons and 23 B.C. Hydro Ski Club members competed in

five events, downhill and slalom, on Ridge Run at Whistler. The Challenge Trophy was won by B.C. Hydro, which is presently in the Hydro Library at Edmonds, Burnaby.

Chalet construction Stage 1 was 70% complete after 5622 hours of work contributed by 143 volunteers, and \$14,700 had been spent so far. Only \$38 remained in the building fund. More debenture sales were required. The club awarded a nominal honorarium to each of the work leaders and to the three ladies in charge of cooking.

Chalet operations reported 150 members and family used the chalet for a total of 407 nights. Cash flow from this and other activities left a balance of \$1,190 to carry over to the 1968/69 season.

Executive officers elected for 1968/69 were:

President	Walter Marks
Vice-President	Otmar Heimbucher
Secretary	Bonnie Jeffery (Chatterton)
Treasurer	Heather Mason
Directors	Harvey Abell, Karl Froschauer, Klaus Haring, Joe Watanabe

Fourth Year-end Meeting, April 25, 1969

The high work levels at B.C. Hydro, together with numerous work related transfers reduced club membership from 151 to 103.

Secretary Bonnie reported 16 executive meetings had been held to organize club activities and to deal with the operational challenges of the chalet.

The chalet had again been looked after by volunteer ski club members. Harvey Abell, manager, also headed a chalet sales committee which drafted minimum rules necessary for comfort and safety. These were explained to the meeting, debated, and adopted.

The bus tours -- to Tod, Big White and Apex -- were again popular. Treasurer Heather reported the club operating surplus was \$973 of which \$450 was earmarked for purchase of three debentures. To date, 119 debentures had been sold and the balance in the capital account was \$117.

Chalet construction manager Walter Marks reported building work was less than in the previous year owing to low debenture sales and reduced number of volunteers, which were mainly concentrated in small groups. Gordon Blue's group completed the difficult burial of 1000 feet of water line from a mountain side stream intrake to the club chalet. Harvey Abell completed inside plumbing in four bathrooms and the hot water

supply and Les Baldwin installed the related electrical wiring.

Lady club members made cushions for club-made furniture in the lounge and curtains for four new family bedrooms in the dorm building.

In the past year 70 members had worked 1487 hours so that the chalet was 85% completed. Honorariums were awarded to work leaders Gordon, Harvey and Les.

President Walter reported on the work of the executive, the problems they had overcome and prospects for improved membership based on what B.C. Hydro Ski Club had to offer. The chalet was more comfortable and revenues were increasing. In future the club hoped to construct an adjacent building with permanent lounge, front desk and caretaker's quarters. Walter, in stepping down as president, thanked members for their dedication to the club and to the sport of skiing.

The new executive elected for the 1969/70 season were:

President	Kim Arnold
Vice-President	Klaus Haring
Secretary	Michelle Weeks
Treasurer	Judy Chapelsky
Directors	Harry Orton, Roy Hughes, Karl Froschauer, Heather Mason

Walter Marks remained on the executive as past president and chalet construction manager for the 1969/70 season.

A Change of Direction

The weak construction treasury had limited progress, and new debenture sales to members were too low to allow the club to contract out some of the work. Since the Ski Club had been organized and run by B.C. Hydro Social Club members it was felt we could look for help from the Social Club. The B.C. Hydro Ski Club constitution stipulated that upon dissolution the Ski Club assets would be turned over to the B.C. Hydro Social Club.

At the May 28, 1969 annual meeting of the Social Club, the main item of new business concerned the application of \$8,000 which the Social Club had accumulated. Under new business, Walter Marks gave the history of the Ski Club and its connection with the Social Club and asked for consideration of help in the capital funding of the chalet.

Roy Hughes moved and John Myslicki seconded a motion that Social Club purchase 16 debentures (for \$2,080). The motion was carried by majority of the 240 in attendance.

This motion was not acted upon. Our letter of June 5, 1969, requesting capital assistance was answered by the Social Club letter of June 9, 1969, advising that the Social Club executive did not wish to make a capital loan to the Ski Club.

The reality for the Ski Club was that the Social Club had other priorities and we would have to forget about funding from the Social Club. We needed more members and more debenture sales. Since our best efforts had not succeeded in financing through more debenture sales within B.C. Hydro, the club chose to amend the Ski Club constitution to open up associate membership to friends of all members. The club membership shifted away from being mostly for B.C. Hydro employees - and would set the club in a new direction, with many new members from the general public.

Chalet Progress to Spring 1970

The executive of the Ski Club gave further support to the chalet builders by purchasing 13 additional debentures from operating savings. The work parties added new family rooms, improved the walk-in trail, added better furnishings and even a "temporary" wood burning fireplace in the "temporary" lounge.

Ski Club assets at the chalet included:

1. Buildings and contents - \$16,996 spent to Feb. 26/70.
2. Building fund, in cash - \$542.
3. Labour - 9088 hours.

Club liabilities to May 31/70:

1. Debentures issued - 134 for \$17,420.
2. Accommodation payment for work - 2272 nights.
3. Debenture coupons (6 per year in lieu of interest) - 502 nights.

The chalet could accommodate 46 persons, but when approaching full capacity, needed additional air venting and an additional fire exit from the dorm building. This and other upgrading would be completed in following years to bring the capital cash cost to \$19,358 -- within the original \$19,500 budget. The only additional cost had been the 13 nominal honorariums granted to work leaders and two honorary life club memberships granted to Walter Marks and Joe Watanabe.

Outlook for the Hydro Ski Club in 1970

The club could look forward to financial stability from a prudent program of activities and a chalet built without a bank loan or mortgage. The redemption of debentures, based on revenue flow from the chalet, and the honoring of debenture coupons and work coupons was carried out as originally promised.

The second stage of the original plan -- the construction of a permanent lounge with stone fireplace and a fire proof connection to the existing buildings -- was still needed. Unfortunately, before this could be built, the entire chalet was destroyed on January 19, 1980, by a fire originating in the building containing the kitchen and temporary lounge.

Fire fighting access and fire hydrants were not available in the Club Cabin Area (Appendix Exhibit 1). This fire motivated the Village of Whistler to build roads and add fire hydrants, water and sewer services in the Club Cabin Area (Appendix Exhibit 2).

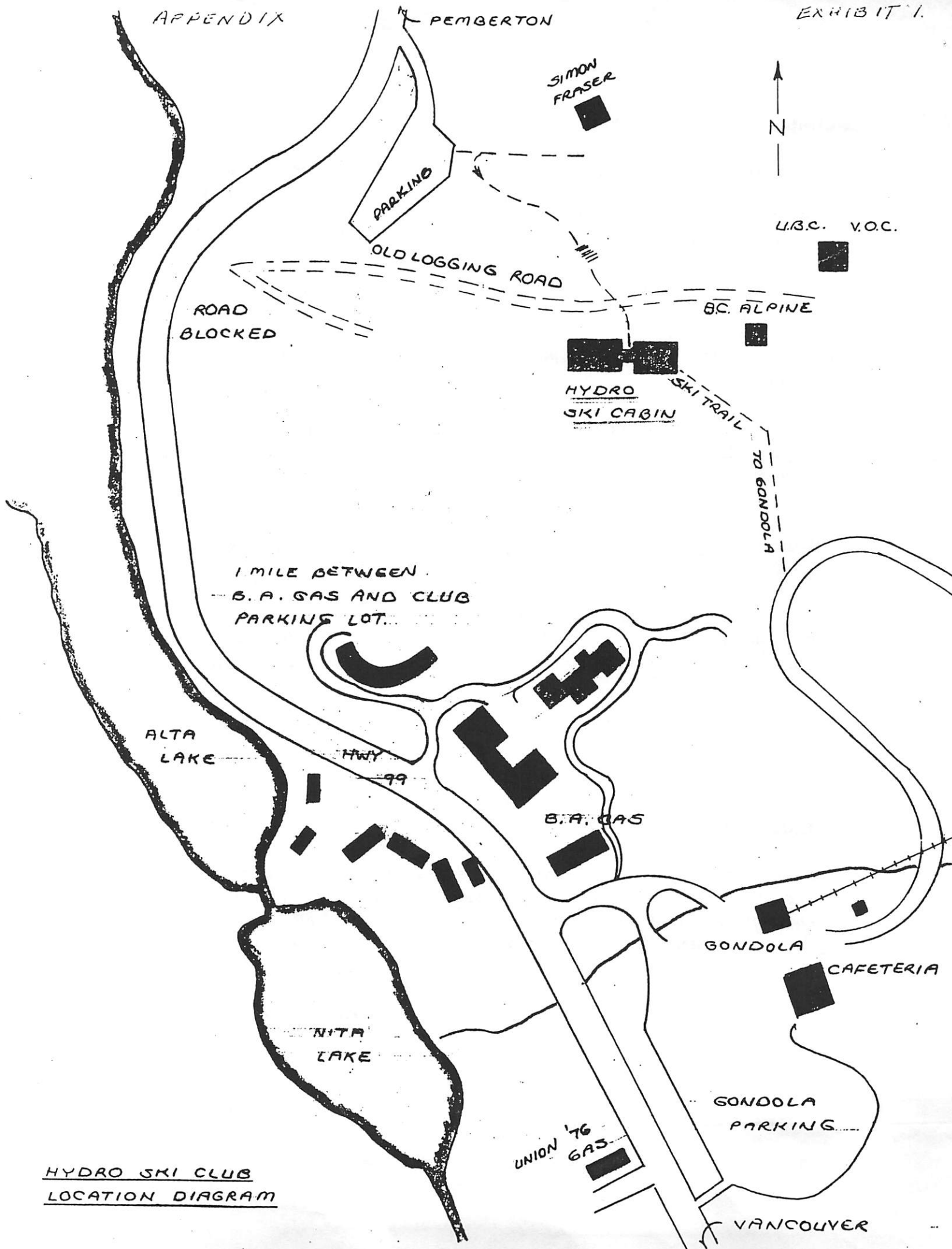
With the insurance proceeds, a new debenture issue and bank financing the B.C. Hydro Ski Club began rebuilding a completely new chalet in 1981, which was completed in 1983.

The successor of the B.C. Hydro Ski Club -- Power Mountain Ski Club -- operates this chalet at 2117 Corrie Drive, Whistler, B.C. V0N 1B0. Phone (604) 932-4545. It offers year-round accommodation to club members, their guests and the public.

Acknowledgement

This account of B.C. Hydro Ski Club activities 1965-69 would not have been possible without the conscientious reporting of executive members. Especially, I am indebted to Jack Pyfinch, on chalet construction accounts, and club secretaries Juanita Cowell, Jean Gibson and Bonnie Chatterton for the quality and detail of their reporting.

***Walter Marks
President 1965-69***

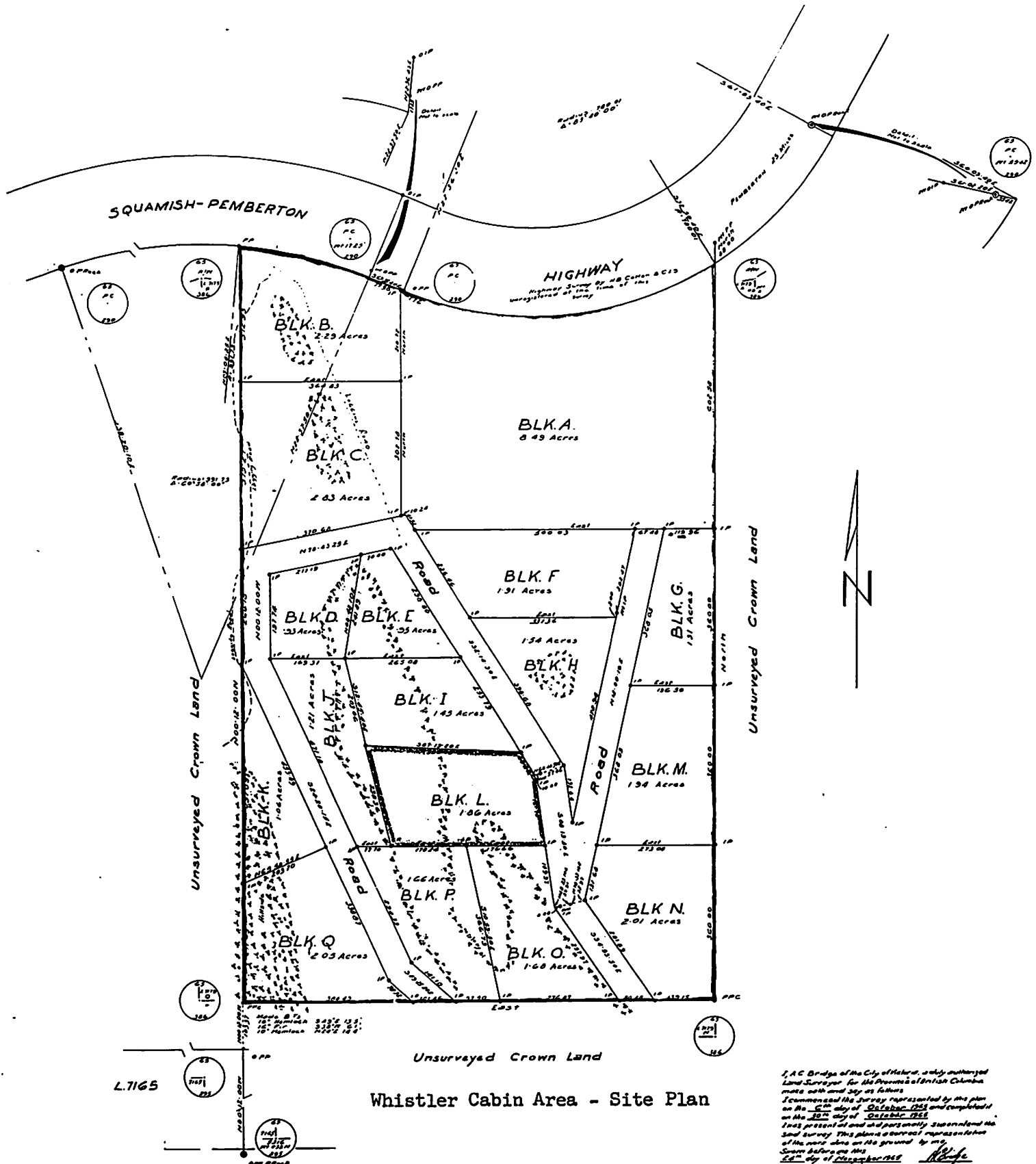


**SURVEY PLAN OF BLOCKS A to Q
LOT 7179, GROUP 1,
NEW WESTMINSTER DISTRICT.**

SCALE 1" = 300'

LEGEND.

*Drawings are astronomical derived
from "Solar" observations*



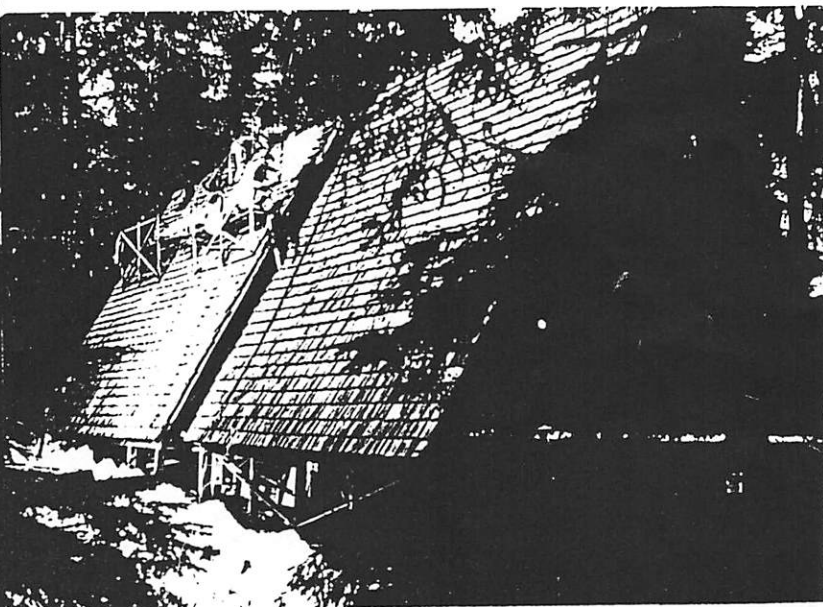
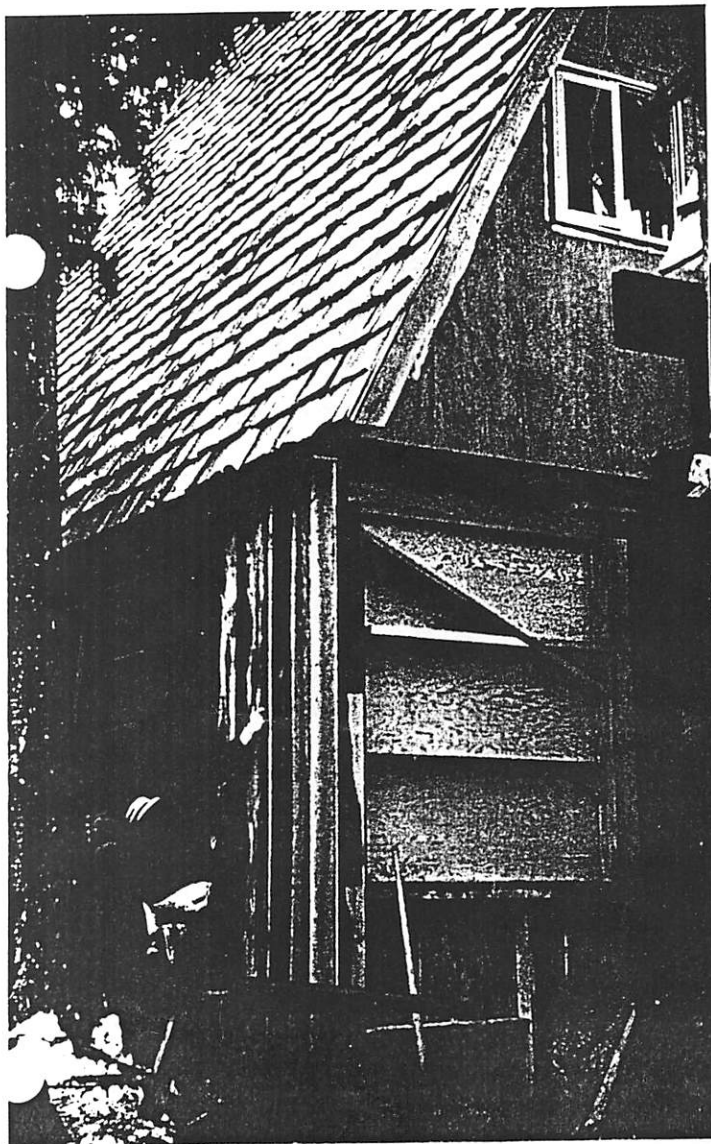
I, A.C. Bridge of the City of Victoria, a duly authorized
Land Surveyor for the Province of British Columbia
make oath and say as follows:
I commenced the survey represented by this plan
on the 1st day of October 1955 and completed it
on the 15th day of October 1955.
I was present at and supervised the survey of the
said survey. This plan is a correct representation
of the same as the same was done on the ground by me.
Witness my hand and the Seal of the City of Victoria this
15th day of October 1955.

A.C. Bridge
A.C. Bridge
A.C. Bridge of the City of Victoria, a duly authorized
Land Surveyor for the Province of British Columbia

Right: Building 1 Foundations. Otmar Heimbucher mixes and Walter Marks and Joe Watanabe place mixed concrete for footings to support the lounge and kitchen building.

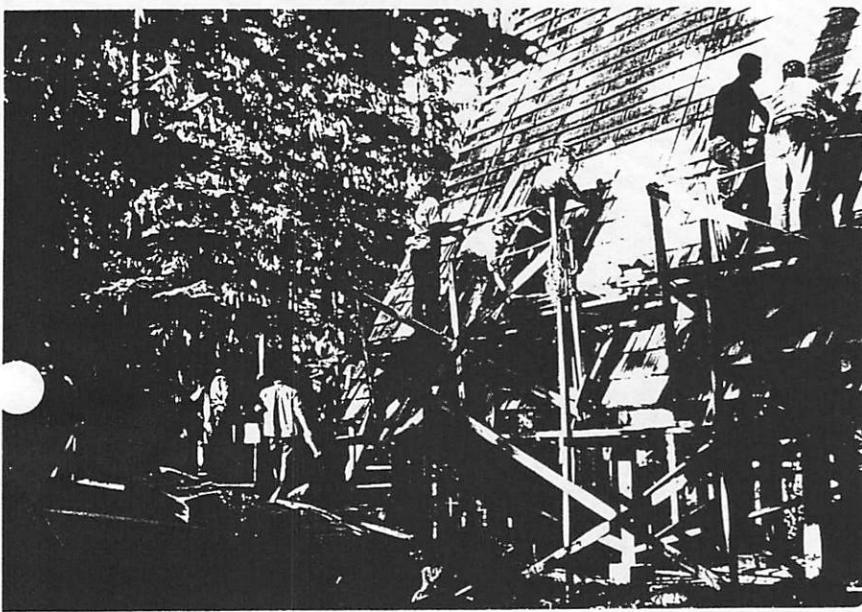
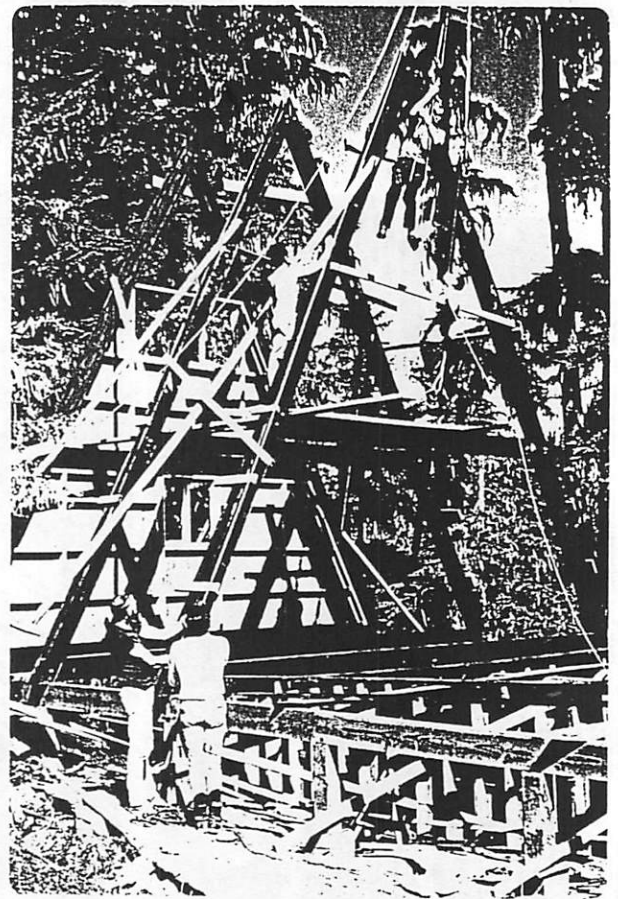


Below: Building 1 shake roofing is completed and construction group is nearing the roof completion on Building 2, just ahead of the 1967 winter.



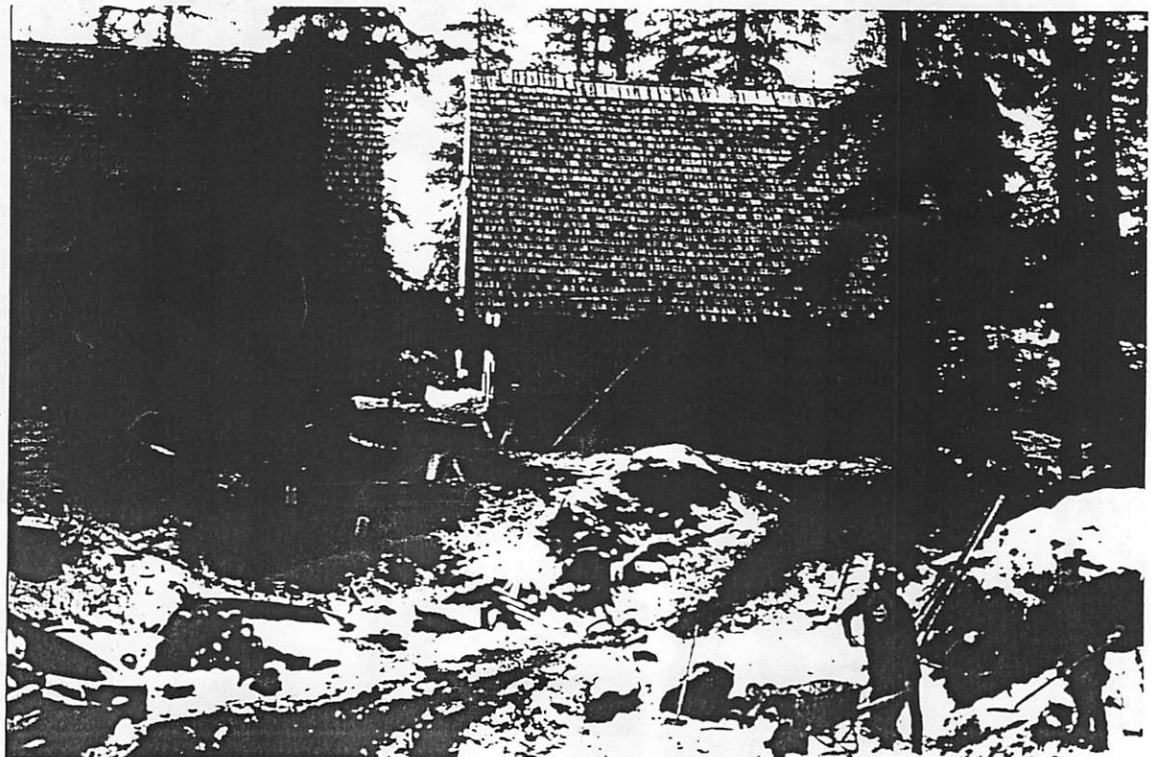
Left: Butch Frith applies siding to lower part of Building 1. The lower floor was closed in to the weather, so upper lounge and kitchen could be used in 1967/68 season.

Right: Building 2 dormitory.
 Assembly of A frame, above lower level entry
 and washrooms, is all physical work using
 block and tackle attached to sky cable which
 was strung between two trees.



Left: Roofing of Building 2 by
 Ernie Stutzer and group starts
 from bottom and moves up with
 moving work platform.

Right: Below Building 2 Jack
 Coupe, Harvey Abell and Sandy
 Foreman mix concrete for
 large septic tank. Time is
 short before freeze-up in
 v. 1967, to complete
 tank and drains so kitchen
 will have water disposal
 working.



INTERCITY

SKIERS A-GO-GO
- Page 11

May '68



Mac Hinds blasts out of starting gate in Intermediate Men's race. He tied for third place.



Walter Marks gives countdown to Jim Kerr, Advertising and Sales, during races at Mt. Whistler.



Hydro Ski Club President Walter Marks, left, accepted trophy for inter-club races from Nick Scriabin, president of H.A. Simons Ski Club.

skiers a-go-go

Two of the nicest features of the B.C. Hydro Ski Club appear on the cover of this issue — pert snowbunny Linda Kowagoye and the club's impressive chalet at Whistler Mountain.

Linda, stenographer-clerk in Statistical Analysis, is certainly one of the most attractive club members and also one of the most competent on the ski slopes. As proof, she has a trophy for winning the intermediate ladies' slalom in races between Hydro and H.A. Simons ski clubs. (List of winners in the races held earlier this year appears at lower left. Beginners ran a shorter course, hence the faster times. Hydro won the contest with 17 points compared to Simons' 13 points.)

The Ski Club is one of the most active social groups in Hydro. Now starting its fourth year, the club boasts over 150 members. Club members and other volunteers devoted over 5,000 man hours during the past 8 months to build an impressive dual A-frame chalet at Whistler financed by the sale of 114 debentures of \$130 each. The building is now 75 per cent complete. When finished it will accommodate over 50 skiers per night for only \$2 each. But the chalet has already been put to good use on a limited basis with members and guests spending over 400 nights there in total during the past season.

Construction of the chalet will continue throughout the summer and completion is expected by the fall.

The club also organizes trips to out-of-town ski spots at group rates for club members. Last season, trips were made to Tod Mountain at Kamloops, Apex at Penticton and Diamond Head in Garibaldi Park. Ski lessons were also offered early in the year at Mt. Baker in conjunction with the Simons club.

Behind all the activity is soft-spoken Walter Marks, district distribution designer, who founded the club just over three years ago and still serves as its president. He was re-elected by acclamation again at the annual meeting April 26. Other officers elected were: vice-president Otmar Heimburcher; secretary Bonnie Jeffery; treasurer Heather Mason; directors Harvey Abell, Klaus Haring, Joe Watanabe and Karl Froschauer.

EVENT AND NAME	TIME (SECS.)	B.C. HYDRO OR H.A. SIMONS
BEGINNER LADIES		
1. Miss M.A. Stevens	19.8	H.A.S.
2. Miss Pam Sheldon	21.1	H.A.S.
3. Miss Michelle Weekes	24.6	B.C.H.
BEGINNER MEN		
1. Terry Gamel	14.8	B.C.H.
2. Reinart Polinsky	24.8	H.A.S.
3. Phil Smith	41.1	B.C.H.
INTERMEDIATE LADIES		
1. Linda Kowagoye	40.8	B.C.H.
2. Carolyn Maloney	43.1	H.A.S.
3. Judy Nugent	44.4	B.C.H.
INTERMEDIATE MEN		
1. Gunter Frey	36.5	H.A.S.
2. Peter Borjeson	37.3	B.C.H.
3. Mac Hinds	37.5	B.C.H.
John Headley	37.5	H.A.S.
ADVANCED MEN		
1. Otmar Heimburcher	35.7	B.C.H.
2. Klaus Haring	36.5	B.C.H.
3. Vern Thomas	37.0	B.C.H.
Jim Munnis	37.0	H.A.S.